

SOLIDS 60"

FACTS

- FADE RESISTANT
- BLEACH CLEANABLE
- STAIN & WATER RESISTANT
- BREATHABLE
- MOLD & MILDEW RESISTANT
- HIGH IN ABRASION

FABRIC SPECIFICATIONS

BASE FABRIC	100% SOLUTION-DYED ACRYLIC	STANDARD PUT-UP	55-65 yards
WARRANTY	10 years	WATER COLUMN	370 mm (14.6")
WEIGHT	9 oz/sq.yd.	WIDTH	1520 mm (60")

CLEANING INSTRUCTIONS

NORMAL STAINS: Remove any loose dirt. Prepare a mixture of cold to lukewarm water and mild soap. Rub in mixture with a soft brush and allow the mixture to thoroughly soak into the fabric. Rinse well with water and air dry. Do not machine dry.

STUBBORN STAINS: Remove as much surface dirt as possible. Soak fabric for one hour in a mixture of 1 gallon cold water, 1/2 cup bleach, and 1/2 cup mild soap. Rub in mixture with a soft brush and rinse thoroughly with cold to lukewarm water and air-dry.

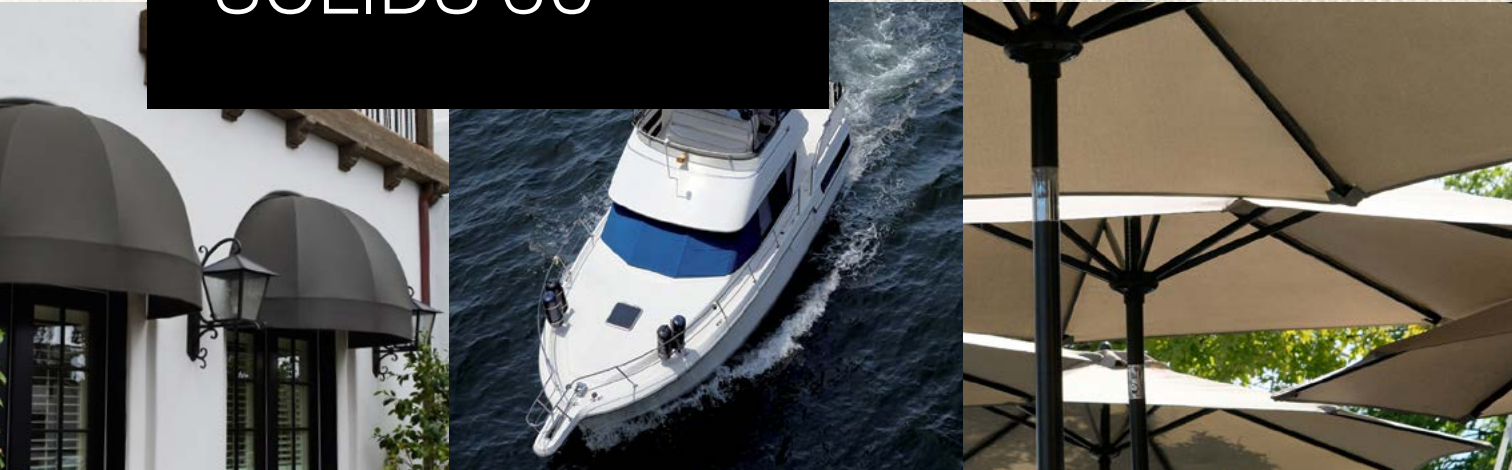
Never use water over 100° Fahrenheit. Do not machine dry. Detergents can be used on Sattler fabrics without harm; it may however remove some of the water and stain resistant properties.



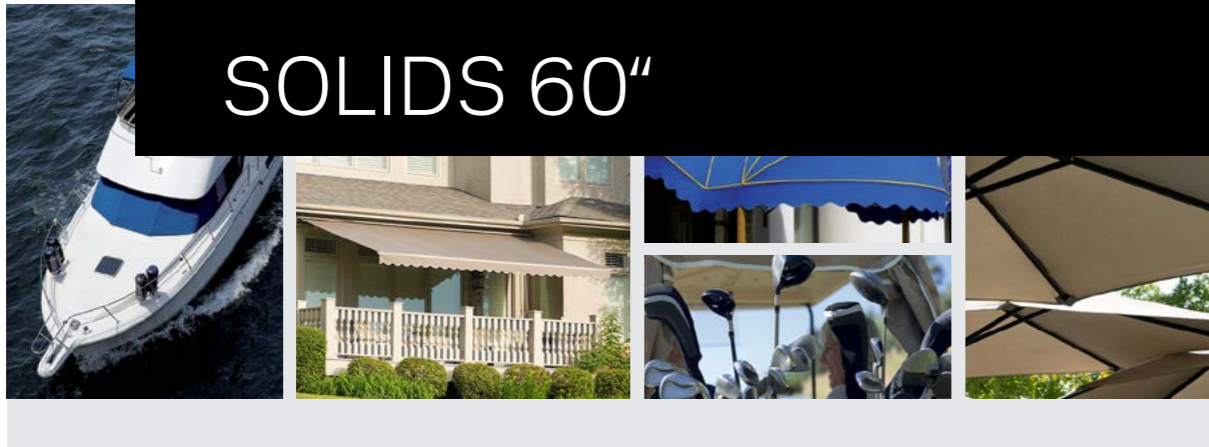
SATTLER CORPORATION
Toll Free 866.688.3872
447 Main Street
Hudson, NC 28638

sales-usa@sattler.com
www.sattler.com

Note: Subject to change depending on technical upgrades. Values indicated without their specific tolerance levels are nominal values with a tolerance of +5%. All data presented is given to the best of our current knowledge for guidance purposes and is not legally binding. The technical data in the material data sheet is based on experience from current productions and does not constitute any quality agreement. This data refers to goods in originally manufactured condition without any processing or handling by the customer. The given data is for information only and merely serves as a guide. It will in no way release the customer from checking the suitability of the intended use or of any resulting liability, before processing and/or treatment.



SOLIDS 60"



SATTLER 60" SOLIDS ARE 100% WOVEN IN THE USA

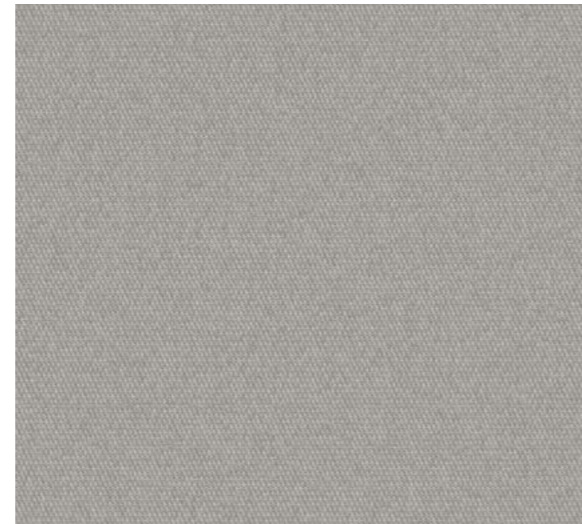


Oil and dirt repellency

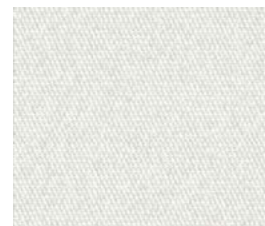


Mildew resistant

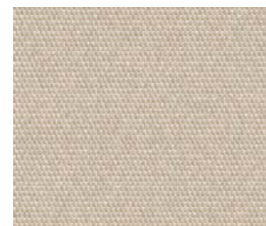
100% SOLUTION DYED ACRYLIC. ALL COLORS ARE AVAILABLE IN FULL ROLLS OR CUT YARDAGE. APPROPRIATE CHARGES AND LIMITATIONS APPLY.



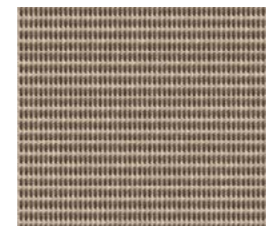
6008
CADET GREY



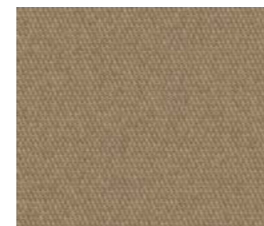
6009
NATURAL WHITE



6020
KHAKI



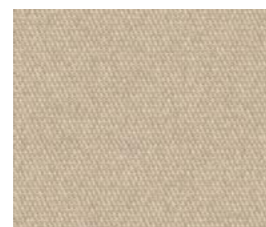
6032
DESERT BEIGE



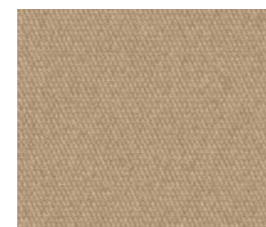
6050
STONE



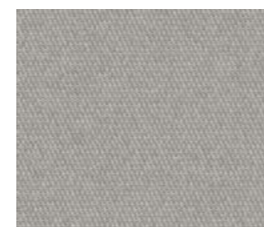
6034
SAND



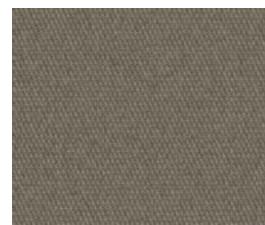
6006
ANTIQUÉ BEIGE



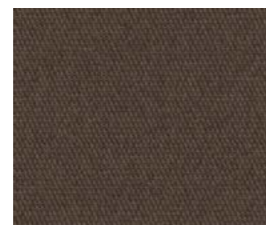
6025
LINEN



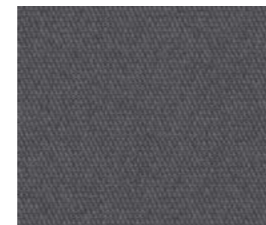
6008
CADET GREY



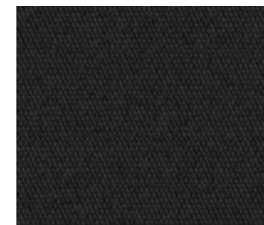
6026
TAUPE



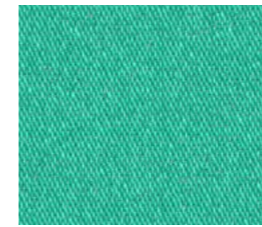
6056
KONA



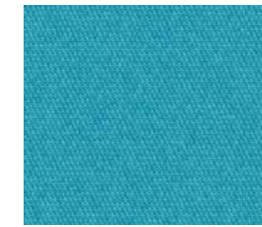
6061
STORM GREY



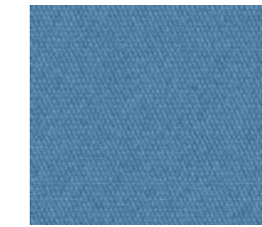
6005
BLACK



6072
ARUBA



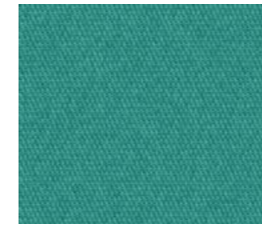
6064
CARIBBEAN BLUE



6051
ISLAND BLUE



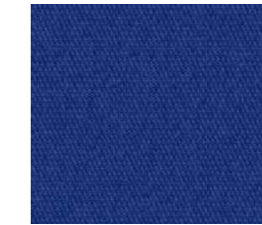
6002
PACIFIC BLUE



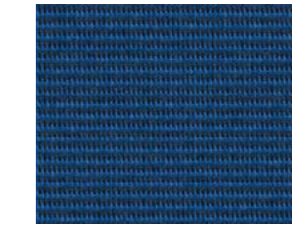
6007
AQUAMARINE



6039
STEEL BLUE



6041
CLASSIC ROYAL BLUE



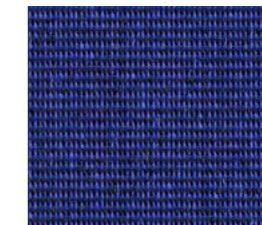
6014
CATALINA BLUE



6022
ROYAL NAVY



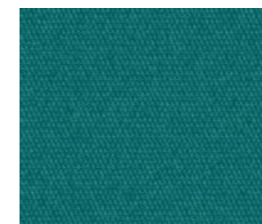
6003
CAPTAIN'S NAVY



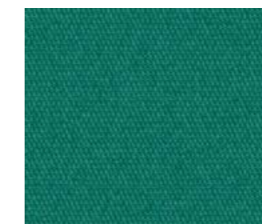
6074
MEDITERRANEAN TWEED



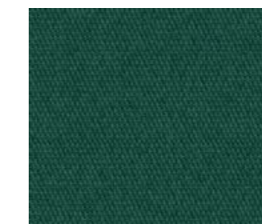
6046
PURPLE HAZE



6016
OZ GREEN



6065
EMERALD



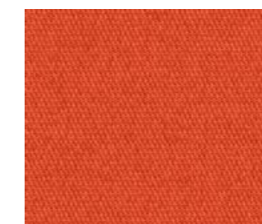
6001
FOREST GREEN



6045
CORAL



6023
DANDELION



6062
TANGERINE



6049
POTTERY



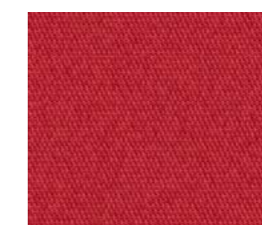
6035
TERRA COTTA



6063
HIBISCUS



6004
BURGUNDY



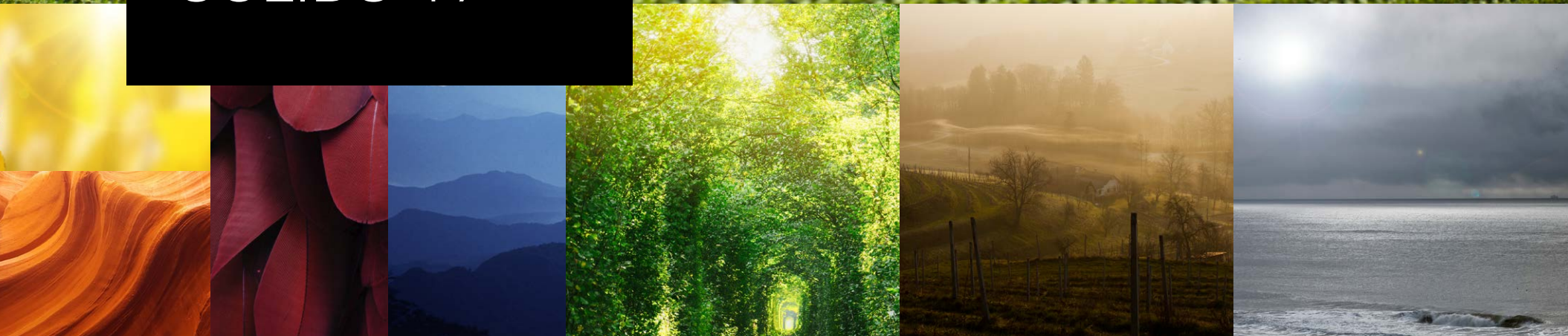
6021
CARDINAL RED



6010
CHINA RED



ELEMENTS SOLIDS 47"



FACTS

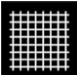












Quality

314 ELEMENTS SOLIDS 47"

Applications



	100 % PAN Solution dyed acrylic	DIN 60 001		Plain 1/1	DIN ISO 9354		47 inches (120 cm)
	8,5 oz/sqyd	290 g/m ² acc. to DIN EN 12127		165 lb/inch	145 daN/5 cm acc. to DIN EN ISO 13934-1		115 lb/inch 100 daN/5 cm acc. to DIN EN ISO 13934-1
	Note: 100	EN 24 920		● min. 7/8 * ● min. 4-5/5 *	DIN EN ISO 105-B04		● min. 7/8 * DIN EN ISO 105-B02
	14,5 inches	370 mm acc. to EN 20 811		Declaration of conformity to awning quality criteria EN 13561			

* white on request | Note: Subject to change in view of technical upgrades. Values indicated without tolerance levels are nominal values with a tolerance range of ±5%. All data presented here is given to the best of our current knowledge for guidance purposes and is not legally binding.

Clean & Care



Never clean with high-pressure cleaners



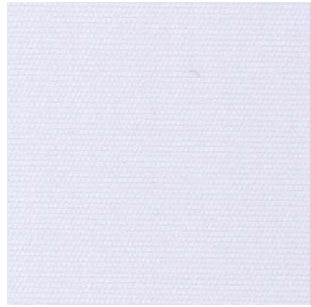
Never roll up or fold whilst wet



Remove loose dirt regularly



Clean with a mild soapy water solution

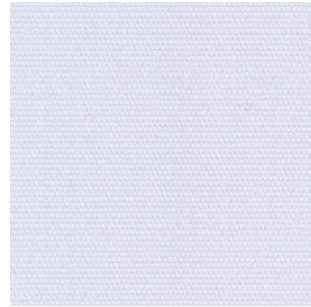


314 910 SNOW

UV 40

T_v	24,8 %
T_s	26,7 %
R_s	66,2 %
A_s	7,2 %
g_{tot}	0,20 *

O

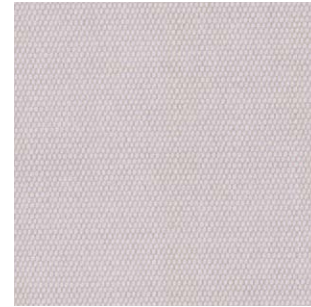


314 010 CLOUD

UV 40

T_v	24,3 %
T_s	25,6 %
R_s	64,8 %
A_s	9,6 %
g_{tot}	0,19 *

O



314 325 ALMOND

UV 60

T_v	17,8 %
T_s	22,0 %
R_s	59,7 %
A_s	18,2 %
g_{tot}	0,17 *

O



314 471 BIRCH

UV 60

T_v	17,7 %
T_s	20,3 %
R_s	56,7 %
A_s	23,0 %
g_{tot}	0,15 *

O

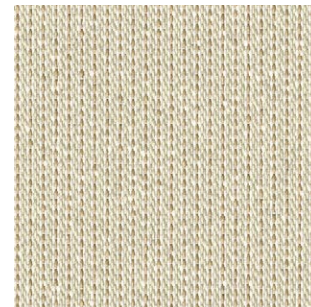


314 851 MILKY

UV 80

T_v	14,6 %
T_s	15,7 %
R_s	53,1 %
A_s	31,3 %
g_{tot}	0,12 *

OO

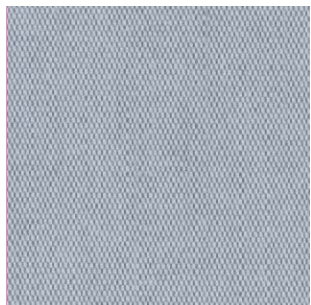


314 070 OYSTER

UV 80

T_v	12,6 %
T_s	19,2 %
R_s	55,3 %
A_s	25,5 %
g_{tot}	0,15 *

O

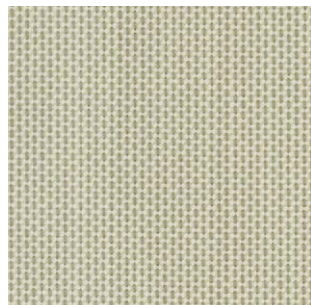


314 030 FOG

UV 60

T_v	12,2 %
T_s	13,2 %
R_s	47,3 %
A_s	39,4 %
g_{tot}	0,11 *

O

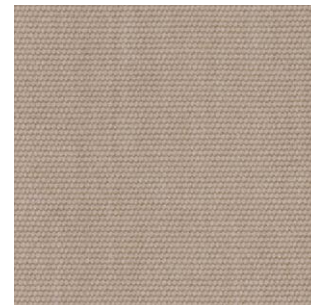


314 814 CASHEW

UV 80

T_v	15,2 %
T_s	19,0 %
R_s	55,4 %
A_s	25,6 %
g_{tot}	0,15 *

O

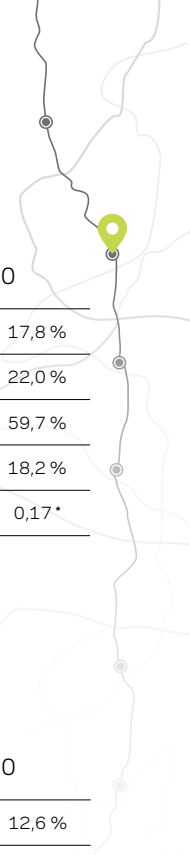


314 020 SHELL

UV 80

T_v	7,0 %
T_s	17,0 %
R_s	49,8 %
A_s	33,2 %
g_{tot}	0,13 *

OO



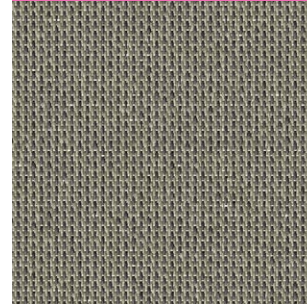


UV 80

T_v	4,5 %
T_s	4,6 %
R_s	32,1 %
A_s	63,3 %
g_{tot}	0,05 *

O

314 028 GRAPHITE

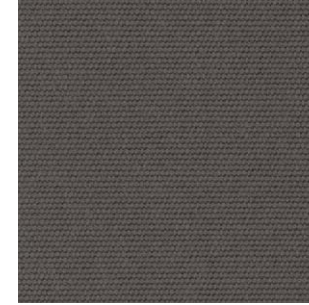


UV 80

T_v	0,7 %
T_s	5,4 %
R_s	26,7 %
A_s	67,9 %
g_{tot}	0,06 *

O

314 083 FORGE



UV 80

T_v	0,1 %
T_s	9,3 %
R_s	34,6 %
A_s	56,2 %
g_{tot}	0,09 *

OO

314 819 CAVE

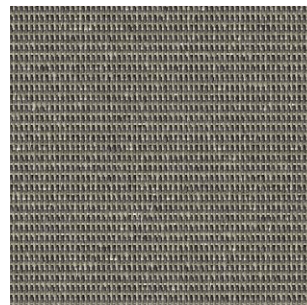


UV 80

T_v	8,6 %
T_s	15,9 %
R_s	47,2 %
A_s	36,9 %
g_{tot}	0,13 *

O

314 081 GREIGE

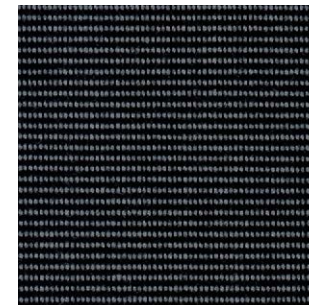


UV 80

T_v	0,7 %
T_s	3,7 %
R_s	22,3 %
A_s	74,0 %
g_{tot}	0,05 *

O

314 085 ROCKS



UV 80

T_v	0,2 %
T_s	0,4 %
R_s	9,8 %
A_s	89,7 %
g_{tot}	0,03 *

OO

314 402 NIGHT SKY

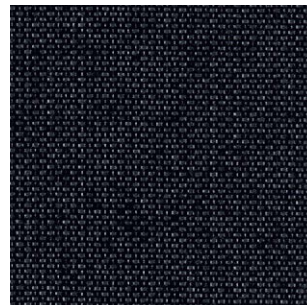


UV 80

T_v	0,0 %
T_s	0,1 %
R_s	10,5 %
A_s	89,4 %
g_{tot}	0,03 *

OO

314 398 GREY STONE



UV 80

T_v	0,2 %
T_s	0,2 %
R_s	6,9 %
A_s	92,9 %
g_{tot}	0,08 *

OO

314 638 ASH

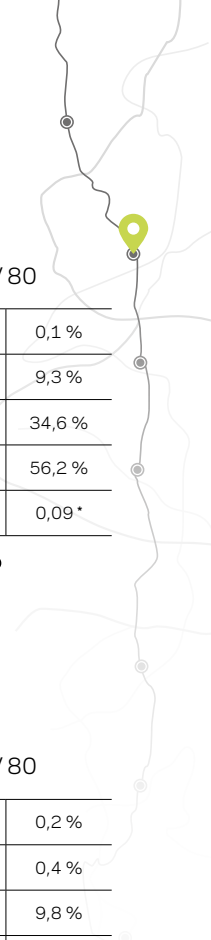


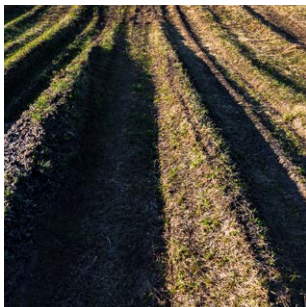
UV 80

T_v	0,0 %
T_s	0,0 %
R_s	2,1 %
A_s	97,9 %
g_{tot}	0,03 *

OO

314 154 BLACK PEPPER



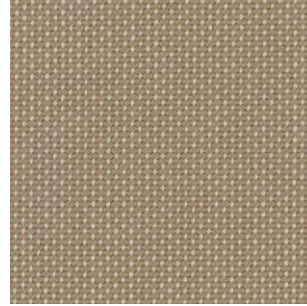


314 071 DUNE

UV 80

T_v	4,7 %
T_s	12,3 %
R_s	42,8 %
A_s	44,9 %
g_{tot}	0,10 *

O



314 921 HAZEL

UV 80

T_v	5,5 %
T_s	13,3 %
R_s	46,9 %
A_s	39,8 %
g_{tot}	0,11 *

OO

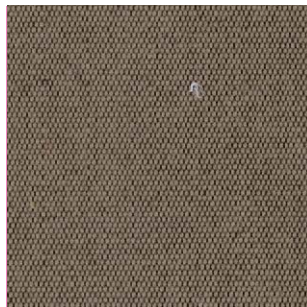


314 917 EARTH

UV 80

T_v	0,1 %
T_s	4,6 %
R_s	26,9 %
A_s	68,5 %
g_{tot}	0,06 *

OO

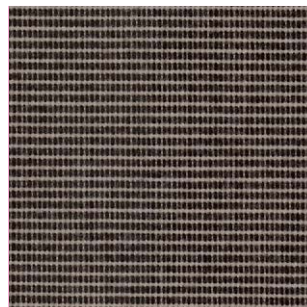


314 919 DESERT

UV 80

T_v	1,2 %
T_s	9,2 %
R_s	36,8 %
A_s	54,0 %
g_{tot}	0,08 *

OO



314 403 OAK

UV 80

T_v	1,8 %
T_s	9,0 %
R_s	34,5 %
A_s	56,5 %
g_{tot}	0,08 *

OO



314 022 COPPER

UV 80

T_v	0,1 %
T_s	7,6 %
R_s	33,8 %
A_s	58,6 %
g_{tot}	0,08 *

OO



314 072 BARK

UV 80

T_v	0,0 %
T_s	1,5 %
R_s	18,3 %
A_s	80,2 %
g_{tot}	0,03 *

OOO



314 013 NUT

UV 80

T_v	0,1 %
T_s	0,6 %
R_s	15,7 %
A_s	83,7 %
g_{tot}	0,03 *

OO

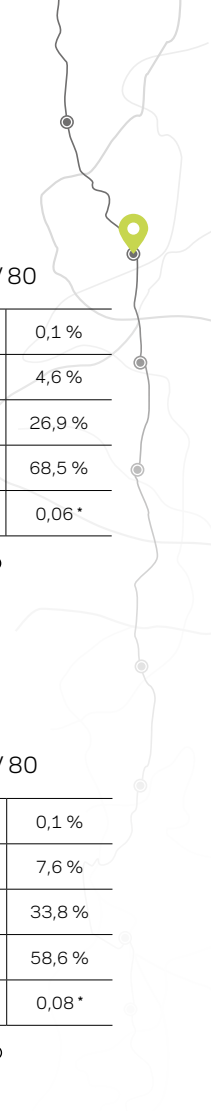


314 016 MAHAGONY

UV 80

T_v	0,0 %
T_s	4,6 %
R_s	24,1 %
A_s	71,3 %
g_{tot}	0,06 *

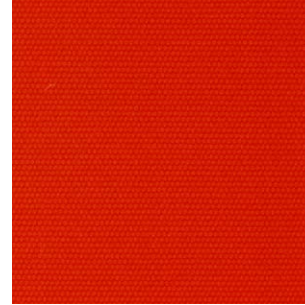
OO





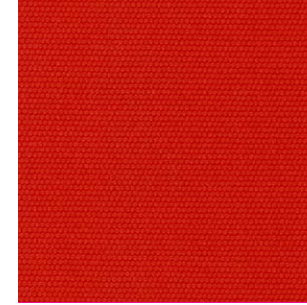
314 003 YELLOW

UV 80	
T_v	12,1 %
T_s	17,3 %
R_s	49,4 %
A_s	33,4 %
g_{tot}	0,14 *
OOO	



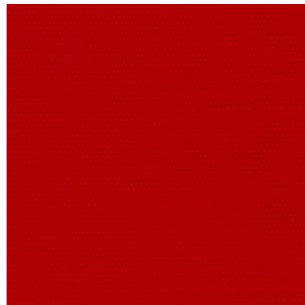
314 002 ORANGE

UV 80	
T_v	5,4 %
T_s	17,4 %
R_s	46,5 %
A_s	36,0 %
g_{tot}	0,14 *
OOO	



314 005 PEACH

UV 80	
T_v	2,3 %
T_s	15,6 %
R_s	45,4 %
A_s	38,9 %
g_{tot}	0,13 *
OOO	



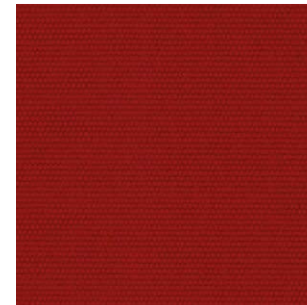
314 007 LILY

UV 80	
T_v	1,6 %
T_s	14,0 %
R_s	43,3 %
A_s	42,7 %
g_{tot}	0,12 *
OOO	



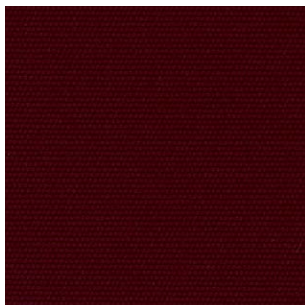
314 001 STRAWBERRY

UV 80	
T_v	0,7 %
T_s	13,6 %
R_s	42,7 %
A_s	43,7 %
g_{tot}	0,12 *
OOO	



314 347 CHERRY

UV 80	
T_v	0,3 %
T_s	6,8 %
R_s	33,2 %
A_s	60,0 %
g_{tot}	0,07 *
OOO	



314 763 BORDEAUX

UV 80	
T_v	0,0 %
T_s	0,6 %
R_s	14,9 %
A_s	84,5 %
g_{tot}	0,03 *
OOO	



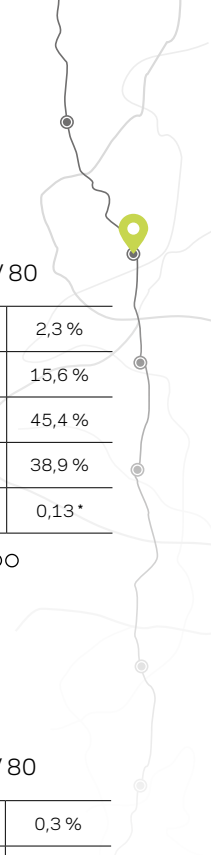
314 397 MAGENTA

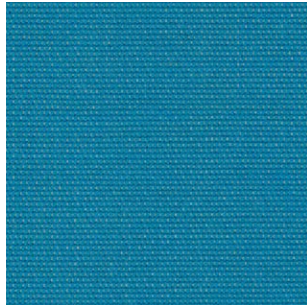
UV 80	
T_v	0,9 %
T_s	14,1 %
R_s	45,2 %
A_s	40,7 %
g_{tot}	0,12 *
OOO	



314 143 PLUM

UV 80	
T_v	0,1 %
T_s	11,8 %
R_s	38,7 %
A_s	49,5 %
g_{tot}	0,10 *
OOO	



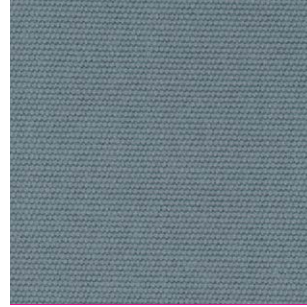


UV 80

T_v	2,6 %
T_s	11,3 %
R_s	39,6 %
A_s	49,1 %
g_{tot}	0,10 *

OO

314 153 SKY



UV 80

T_v	1,6 %
T_s	3,2 %
R_s	31,7 %
A_s	65,1 %
g_{tot}	0,04 *

OO

314 941 SCREE



UV 80

T_v	8,4 %
T_s	10,1 %
R_s	41,1 %
A_s	48,8 %
g_{tot}	0,09 *

O

314 080 METAL

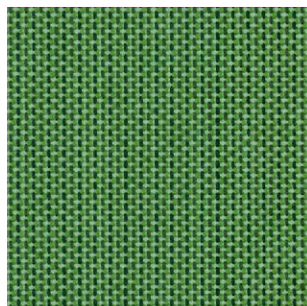


UV 80

T_v	0,0 %
T_s	3,7 %
R_s	22,3 %
A_s	73,9 %
g_{tot}	0,05 *

OO

314 011 NAUTICAL



UV 80

T_v	3,9 %
T_s	9,8 %
R_s	36,0 %
A_s	54,1 %
g_{tot}	0,09 *

OO

314 396 LEAF



UV 80

T_v	0,1 %
T_s	7,7 %
R_s	29,8 %
A_s	62,5 %
g_{tot}	0,08 *

OO

314 624 AVOCADO



UV 80

T_v	0,0 %
T_s	0,1 %
R_s	8,7 %
A_s	91,2 %
g_{tot}	0,03 *

OO

314 414 MARINE

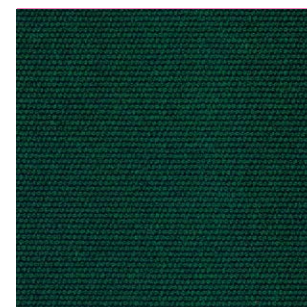


UV 80

T_v	0,0 %
T_s	5,5 %
R_s	22,8 %
A_s	71,7 %
g_{tot}	0,06 *

OOO

314 006 ROYAL BLUE

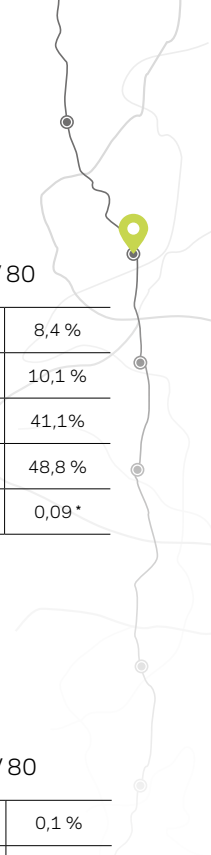


UV 80

T_v	0,0 %
T_s	0,1 %
R_s	8,2 %
A_s	91,7 %
g_{tot}	0,03 *

OO

314 362 FOREST



LEGEND



Environment & Sustainability: certified according to ISO 14001 & OEKO-Tex®



Oil and dirt repellency



Mildew resistant



Retractable awning



Parasol



Sun sail



Basket awning



Vertical awning



Vario-valance



Pergola and conservatory Awnings



Base fabric



Weave



Width



Total weight



Tensile strength warp



Tensile strength weft



Water repellency



Weather fastness



Light fastness



Water column



Price category

* Vertical use: g_{tot} calculation according to DIN EN 13 363-2 double glazed with heat protection $U = 1.2$ | $g = 0.59$ (reference glass C according to DIN EN 14501 for outdoor use)
 Tv = Light transmission | Ts = Solar transmittance | Rs = Solar reflectance | As = Solar absorptance